

LOVE PITTSFIELD

downtown & beyond

2024-25



DOWNTOWNPITTSFIELD.COM

LOVEPITTSFIELD.COM

A collaboration between Downtown Pittsfield, Inc. & the City of Pittsfield's Office of Cultural Development



**FIRST
FRIDAYS
AT FIVE**

MakersMarket



LOCAL VENDORS

FamilyFunZone

**FREE FAMILY
ACTIVITIES**



Artswalk



**ART EXHIBITS
OPEN STUDIOS**

FESTIVAL!

**MUSIC, DANCE
AND MORE!**



FIRST FRIDAY, MAY-SEPT, 5-8 PM
LOVEPITTSFIELD.COM/FIRST-FRIDAYS



**WELCOME TO
PITTSFIELD**

The City of Pittsfield is the Berkshires' largest city and is truly a year-round destination. We are home to award-winning restaurants, world-class performance venues, one-of-a-kind historic properties, unique retail shops, a vibrant music and art scene, varied outdoor recreation opportunities, and much more.

Create your perfect Pittsfield itinerary with the help of this guide. Whether you are a foodie, an art lover, or an outdoor fan, you will find your perfect day here. The City of Pittsfield welcomes you with open arms to explore all that our city has to offer. Come be a part of our vibrant community. You won't be disappointed!

Follow @downtownpittsfield and @culturalpittsfield on Facebook and Instagram for daily updates on all things Pittsfield!

ANNUAL EVENTS.....4

Enjoy family-friendly activities year-round sponsored by our cultural organizations – featuring art, entertainment, and food!

EXPERIENCE PITTSFIELD 6

Explore a lively roster of music, dance, community festivals, and celebrations, including two highly-acclaimed professional theatres.

DOWNTOWN DINING 15

Experience cuisine from around the world to satisfy every palate and budget. Breakfast, lunch, coffee, dinner, and drinks, often accompanied by live music.

DOWNTOWN SHOPPING 17

Our downtown retailers are fully stocked with housewares, decor, clothing, jewelry, candles, art, plants, and much more!

MURALS AND PUBLIC ART 22

Pittsfield is home to a vibrant visual arts scene, with public art, artist studios, and the First Fridays Artswalk.

LIVING & WORKING DOWNTOWN24

Our community and service organizations will help you meet the demands of everyday life with the highest quality of care.

DOWNTOWN DIRECTORY38

THE BEAUTIFUL OUTDOORS 44

Relish an array of outdoor activities from hiking to skiing to swimming, with ways to connect with nature in all four seasons.

THANK YOU

to our Major Donors and Downtown Pittsfield, Inc. Members

Platinum Level: \$5,000+



The Berkshire Eagle



Gold Level: \$3,000 - \$4,999



Silver Level: \$2,000 - \$2,999



Bronze Level: \$1,000 - \$1,999



Major Donors: Downtown Property Owners



Capitol Square Associates

Steve Oakes

Linda Mitchell & Giora Witkowski

PARKING DOWNTOWN

Pay-by-Plate Parking

Monday - Friday, 8 am - 4 pm

FREE after 4 pm and on weekends & holidays

How to Pay

1. Park vehicle in space
2. **ALWAYS enter your plate number** – even for the first FREE 30 minutes
3. Pay parking fee at meter or use app
4. Retain receipt for proof of payment, no need to display ticket on dash



Ways to Pay

1. Meters – coin and credit card only
2. Passport Parking App – ppprk.com

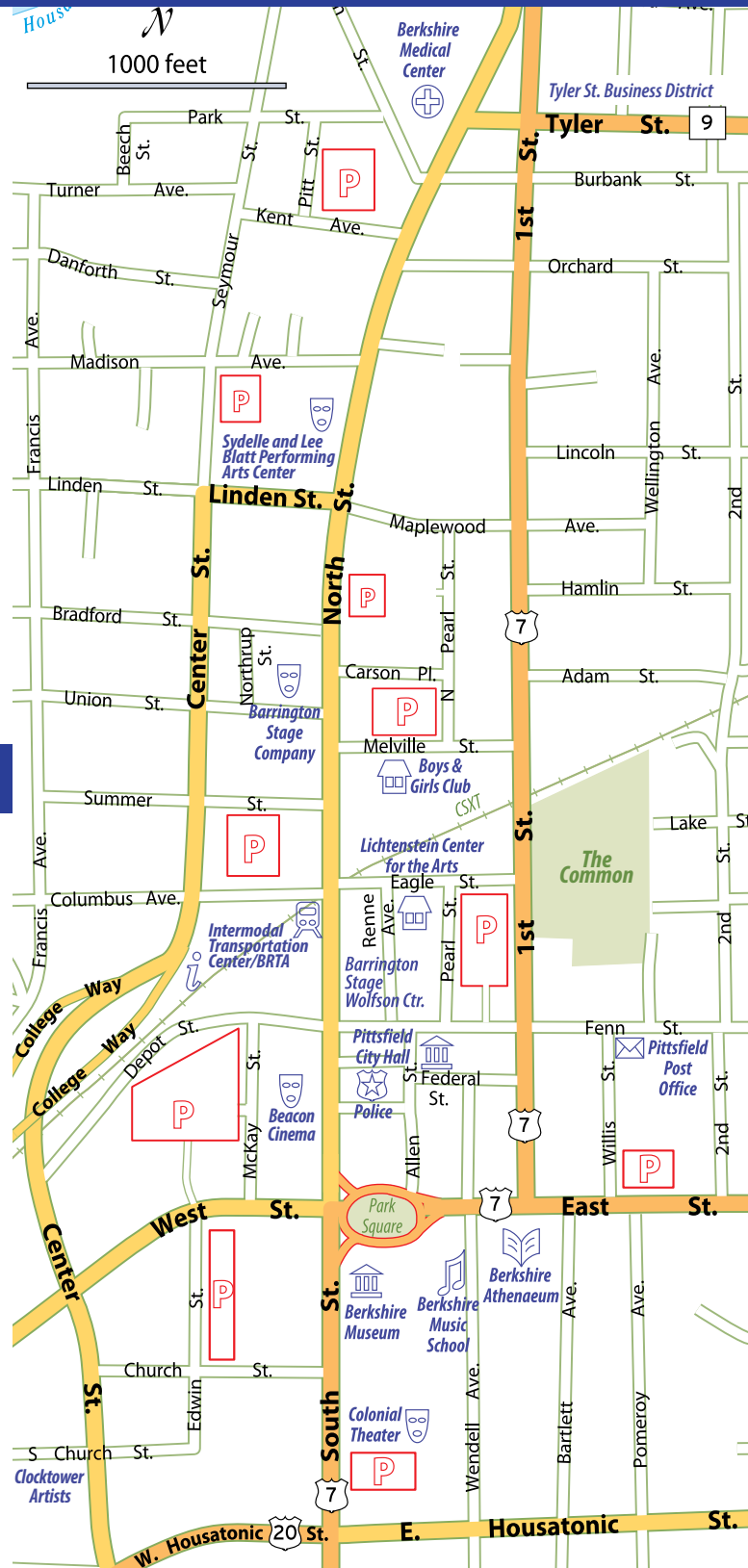
North St. parking = Zone 1012 (\$1/hour, 3-hour limit)

Additional street parking = Zone 1015 (\$1/hour)

Lot parking = Zone 1014 (50 cents/hour)

For parking maps and more information:
downtownpittsfield.com/park

DOWNTOWN MAP



Cover photos: Barrington Stage Company's *Cabaret*, credit Daniel-Rader; "Sisterhood" mural by Silvia López Chavez, credit Nicholas Russo; Pittsfield State Forest, credit Good Bites & Glass Pints. Inside front cover: The Whiskey Treaty Roadshow, credit EKRWcreative; Berkshire Dog Trading Co; Kids' Paint & Sip and Artswalk photos, credit Zach Morris; Drummers, credit Good Bites & Glass Pints



ANNUAL EVENTS 2024-25

Berkshire Theatre Group at The Colonial Theatre

Year round | berkshiretheatregroup.org

First Fridays at Five

May-September | lovepittsfield.com

First Fridays Artswalk • Family Fun Zone • Makers Market
Music and more!

First Fridays Artswalk

May-September | firstfridaysartswalk.com

Pittsfield Farmers Market (Outdoors at The Common)

May-October, Saturdays
farmersmarketpittsfield.org

Barrington Stage Company

June-October | barringtonstageco.org



City of Pittsfield's Halloween Parade

October 25 | cityofpittsfield.org

Pittsfield Farmers Market (Indoors at Zion Lutheran Church)

November-April, Second Saturday of the month
farmersmarketpittsfield.org

Festival of Trees 2024

November 16 - January 6

berkshiremuseum.org

Small Business Weekend

November 22-24 | downtownpittsfield.com

Wreath Art Sale & Auction

December 6 | lovepittsfield.com



Berkshire Pride Parade and Festival

June 6 | The Common | berkshirepride.org

Juneteenth Celebration

June 16 | Durant Park | naacpberkshires.org

Fourth of July Parade

July 4 | pittsfieldparade.com

Common Ground Arts Festival

July 6 | The Common | milltownfoundation.org

Berkshire Jazz Summer Showcase

July 13 | The Common | berkshiresjazz.org

Live on the Lake

July-August | Onota Lake | live959.com/tags/live-on-the-lake

Mountain Day feat. The Whiskey Treaty Roadshow

July 20 | Bousquet Mountain | bousquetmountain.com

Bousquet Jazz Festival

August 17 | Bousquet Mountain | bousquetmountain.com

Oktoberfest + Noktoberfest

October 5 + 6 | Bousquet Mountain
bousquetmountain.com

Downtown Pittsfield... It's Alive!

October 19 | downtownpittsfield.com



Festive Frolic

December 6-8 | downtownpittsfield.com

Radiant Nights

December | hancockshakervillage.org

10x10 Upstreet Winter Arts Festival

February 13-23 | lovepittsfield.com

Downtown Pittsfield Restaurant Celebration

February | downtownpittsfield.com

Ten Days of Play at the Berkshire Museum

February 14-23 | berkshiremuseum.org

BSC 10x10 New Play Festival

February-March | barringtonstageco.org

Pittsfield City Jazz Festival

April 18-28 | berkshiresjazz.org

Downtown Celebrates Spring

April | downtownpittsfield.com

Baby Animals at Hancock Shaker Village

April-May | hancockshakervillage.org

ArtWeek Berkshires

May 16-26 | berkshires.org



10x10 Upstreet Winter Arts Festival, credit Debbie Storie;
Let it Shine! Block Party, credit Carolina Orellana; Juneteenth
Celebration, credit Gillian Jones-Heck/Berkshire Eagle; Fourth
of July Parade, credit Ben Garver/Berkshire Eagle

Visit lovepittsfield.com and downtownpittsfield.com
for a daily calendar of all events.

Oktoberfest, credit Bousquet Mountain; "Ping. Pong." by Deborah Carter, credit Berkshire Art Center;
Artswalk Blog Bus, credit Liam Gorman; Pittsfield Farmers Market, credit Roots Rising; Hancock
Shaker Village Radiant Nights; Barrington Stage Company's 2024 10x10 Play Festival

EXPERIENCE PITTSFIELD



Berkshire Theatre Group's *Rock and Roll Man, the Alan Freed Story*, credit Emma K. Rothenberg-Ware

Designated one of the Cultural Districts in Massachusetts, Pittsfield's downtown, known as the Upstreet Cultural District, boasts a lively roster of music, dance, theatre, community festivals, and celebrations, including two highly acclaimed professional theatres – the Colonial Theatre, part of Berkshire Theatre Group, and Barrington Stage Company. There's a vibrant visual arts scene in Pittsfield too, with public art, thriving galleries, artist studios and cooperatives, and the First Fridays Artswalk. Cultural festivals include First Fridays at Five, Berkshire Pride, Pittsfield CityJazz Festival, 10x10 Upstreet Arts Festival, and more!

ENTERTAINMENT/PERFORMING ARTS

Barrington Stage Company

30 Union St. & 36 Linden St. | 413-236-8888 | barringtonstageco.org
Celebrate 30 years with BSC's 2024 Season! Don't miss: big musicals, world premiere plays, concerts, cabarets, and more! Voted Best in the Berkshires 6 years in a row and BroadwayWorld's Theatre of the Decade. See ad on back cover.

Berkshire Music School

30 Wendell Ave. | 413-442-1411 | berkshiremusicschool.org
Berkshire Music School offers private lessons and community group classes on a sliding scale. All levels. All ages. All instruments.

Berkshire Theatre Group – Colonial Theatre

111 South St. | 413-997-4444 | berkshiretheatregroup.org
Berkshire Theatre Group is a center for acclaimed and transformative work, featuring world-class theatre and musicals, legendary musicians, comedy, and family events on multiple stages and spaces, in Pittsfield and Stockbridge. See ad on back cover.

Berkshires Jazz, Inc.

413-841-7718 | berkshiresjazz.org
Berkshires Jazz promotes jazz education and presents a wide range of nationally known and rising groups, as well as local performers, at year-round festivals and concerts in Berkshire County. Flagship events include the Pittsfield CityJazz Festival, the Bousquet Jazz Festival, and the Berkshire Jazz Showcase. See ad on page 8.



Berkshire Museum

Eagles Community Band

P.O. Box 1946 | eaglesband.org
The Eagles Community Band has a variety of performing ensembles, including wind, brass, marching band, and stage band.

Phoenix Theatres Beacon Cinema

57 North St. | 413-358-4780 | phoenixmovies.net
Phoenix Theatres Beacon Cinema offers an exceptional movie-going experience with Dolby Digital 7.1 surround sound, Christie Digital Projectors, and reserved seating in all new heated reclining seats at affordable family-friendly prices!

MUSEUMS/LIBRARY

Berkshire Athenaeum, Public Library

1 Wendell Ave. | 413-499-9480 | pittsfieldlibrary.org
Explore your interests, broaden your mind, and expand your skills at the Berkshire Athenaeum, Pittsfield's Public Library. With free access to books, 3D printers, genealogy research, and programs for all ages, the Library is here for the community to learn, create, and collaborate. Wonder what else is inside? Stop by!

Berkshire Museum

39 South St. | 413-443-7171 | berkshireremuseum.org
Get curious! The Berkshire Museum combines art, science, and history to create thought-provoking experiences for the whole family. Meet wildlife in the Aquarium, discover local artists and innovators, and more! See ad on page 11.

DOWNTOWN PITTSFIELD AMBASSADORS

Need information?

Ask a Downtown Pittsfield Ambassador – our walking and welcoming concierges. They can help you find parking, offer directions and wayfinding, and provide information on dining, shopping, cultural activities, and more!

July - September 2



*Sponsored by the City of Pittsfield,
BRTA and the Guardian Life
Insurance Company of America.*



Herman Melville's Arrowhead,
credit Tricia McCormack

Hancock Shaker Village

1843 West Housatonic St. (Route 20)
413-443-0188 | hancockshakervillage.org
A living history museum with 20 historic buildings and gardens. Explore the Round Stone Barn and the oldest working farm in the Berkshires and visit the animals. Discover thousands of Shaker artifacts and furniture. Stroll through the Village and see why the Shakers called it the "City of Peace". Cafe & Mercantile Store open daily. See website for information on events, workshops, and exhibits.

Herman Melville's Arrowhead

Owned and operated by the Berkshire County Historical Society
780 Holmes Rd. | 413-442-1793 | berkshirehistory.org
Arrowhead was author Herman Melville's home from 1850 to 1863, where he wrote the great American novel Moby-Dick and other works. It is now home to the Berkshire County Historical Society, which offers tours, nature trails, exhibits, a museum shop, and special events and programs.

Samuel Harrison House

82 Third St. | samuelharrison.org
Reverend Samuel Harrison was a renowned 19th-century civil rights advocate, writer, and preacher in Pittsfield who served as chaplain to the legendary 54th Regiment in the Civil War, and successfully fought for equal pay for Union soldiers of color. His home is now a National Historic Landmark and a place to teach the values embodied in Harrison's life.

VISUAL ARTS/PUBLIC ART

Art In The Berkshires

413-240-4938 | info@artintheberkshires.com | artintheberkshires.com

Artscape: The Public Art Committee of the City of Pittsfield

413-499-9368 | facebook.com/pittsfieldartscene
The Artscape program enhances downtown's character and attracts visitors by installing and promoting works of art in various outdoor locations accessible to the public. Download the Downtown Pittsfield App in the App Store or on Google Play to take a virtual tour of art anytime on your cell phone.

BERKSHIRES JAZZ
Presenting jazz masters, rising performers, local artists and jazz education year round.
berkshiresjazz.org

Berkshire Art Association

berkshireartassociation.org
The Berkshire Art Association is dedicated to promoting the visual arts in Berkshire County, providing opportunities for exhibition and education.

Berkshire Art Center

141 North St., Suite 2
413-298-5252 | berkshireartcenter.org
Make Art, Buy Art! Berkshire Art Center offers classes and events year-round for all ages and skill levels. Visit BAC's Gallery Shop for handmade artwork, discounted art materials, and more! See ad below.

Berkshire Lightscapes

berkshirelightscapes.com
Berkshire Lightscapes is lighting up the exteriors of downtown buildings and public spaces to help illuminate and energize downtown. This new artistic, energy efficient LED lighting is coordinated between buildings and allows for exciting light shows year-round. See ad on page 37.

Clock Tower Artists

75 South Church St., 3rd Floor | clocktowerartists.com
Clock Tower Artists is Pittsfield's newest art attraction, featuring working artists' studios and a large bright gallery space. Housed in a historic mill building close to downtown, the space features soaring ceilings and large, light-filled windows that enhance the visitor's experience with the art. There is ample parking and an elevator. The public is welcome during the First Fridays Artswalk from May to September, 5 to 8 pm, and the gallery is open Monday through Friday for self-guided tours. To schedule individual studio visits, go to the Clock Tower Artists website for artist contact information. Artists: Deborah H. Carter, Joanie Colfi, Marion H. Grant, Stacey Healy, Caroline Kelley, Bruce Laird, Mark Mellinger, Linda Petrocine, Shany Porras, Sally Tiska Rice, Ilene Richard, Audrey Shachnow, and Stefanie Weber.



Clock Tower Artists,
credit Ben Garver/Berkshire Eagle

BAC BERKSHIRE ART CENTER
CREATE SHOP MAKE EXHIBIT
141 NORTH STREET, PITTSFIELD | BERKSHIREARTCENTER.ORG | 413.298.5252



Pittsfield Beautiful

First Fridays Artswalk

413-443-6501 | firstfridaysartswalk.com
First Fridays Artswalk transforms downtown Pittsfield retailers, restaurants, and organizations into art galleries. Explore art and meet artists during opening receptions on the first Friday of the month, May through September from 5 to 8 pm, with most art on display all month long. Free Kids' Paint & Sip, live music, open studios, and live art demonstrations on the first Friday. First Fridays Artswalk joins The City of Pittsfield's First Fridays at Five in 2024! Enjoy a Makers Market, Family Fun Zone, live entertainment, and so much more at

this new downtown Festival! Download the Downtown Pittsfield App in the App Store or on Google Play to take a virtual tour of art anytime on your cell phone. See ad on front inside cover.

Lichtenstein Center for the Arts

28 Renne Ave. | 413-499-9348 | lovepittsfield.com
This city-owned community arts center boasts a first-floor gallery space, hosting changing art shows featuring local and regional artists, classes, performances, gatherings, readings, and more. The Lichtenstein also houses nine working artist studios, community space, a ceramics workshop, and a darkroom.

NUarts Studios & Gallery

311 North St., 2nd Floor | nuartsgallery.com

Pittsfield Beautiful

pittsfieldbeautiful.org
We keep Pittsfield beautiful...one flower at a time! Pittsfield Beautiful, a non-profit, volunteer-run organization, plants and maintains gardens and containers throughout the City in order to help Pittsfield be a truly welcoming community. We hope that through this example of community pride and service that this spirit will spread throughout Pittsfield.

THECOLLAB by Guelce Collaborative Marketing

163 North St. | 413-553-7215 | guelcecollaborative.com/thecollab

Subscribe!
News from
The Heart of the Berkshires

Want downtown Pittsfield products, events, and exclusive deals delivered to your inbox? Subscribe at downtownpittsfield.com

Downtown Pittsfield



BERKSHIRE MUSEUM



HISTORY. CULTURE.
PLANET. LIFE.

39 SOUTH ST, PITTSFIELD, MA 01201
(413) 443- 7171 | berkshitemuseum.org

FARMERS MARKET

Pittsfield Farmers Market

100 First St. | 413-344-0816 | farmersmarketpittsfield.org

Powered by Roots Rising, the Pittsfield Farmers Market is the first teen-run market in the region. A year-round market with live music, chef demos, workshops, and children's activities, the Pittsfield Farmers Market believes everyone should have access to fresh, healthy food. Find the market in the First Street Common each Saturday from 9 am to 1 pm, May through October, and in the Zion Lutheran Church each second Saturday from 9 am to 1 pm, November through April.

WELLNESS/FITNESS/RECREATION

Berkshire Fitness and Wellness Center

137 North St., Crawford Square | 413-885-1633 | bwstudio.com

Berkshire Fitness and Wellness Center is the fitness facility where people get real results. We are a hybrid (live and Zoom) facility, offering the best equipment, personal trainers, and instructors, and a wide variety of classes including yoga, Pilates, tai chi, spinning, Zumba, boot camp, Pilates Reformer, and many more! Our philosophy drives us to create a fun community fitness center.

Berkshire Nautilus

42 Summer St. | 413-499-1217 | berkshirenautilus.com

A full-service health club, Berkshire Nautilus offers the largest free weight floor in the Berkshires, three different lines of strength training equipment, and over 50 pieces of cardiovascular equipment. Berkshire Nautilus's spacious locker room facilities offer separate hot tubs, saunas, and steam rooms for both men and women.

Berkshire Yoga Dance & Fitness

55 North St., Suite 201 (above Beacon Cinema)

413-418-4001 | berkshireyogadancefitness.com

Find Joy Through Movement with us in-studio, outdoors, and online! Join us for weekly classes, schedule a private session, or book a specialty class for your group. Whether you are just starting out or have been practicing for years, we have something for you! Come experience inspiring transformation for your body, mind, spirit, and soul. We can't wait to meet you!

Preferred Hotels of Downtown Pittsfield, Inc.

Best Western Plus Berkshire Hills Inn & Suites

1350 West Housatonic St. | 413-442-8714 | bestwestern.com

Hotel on North

297 North St. | 413-358-4741 | hotelonnorth.com

Named one of the Top 10 U.S. Hotels for customer service by Trip Advisor, Hotel on North is a 45-room boutique hotel that's a cool blend of historic ambiance and quirky décor. Located in downtown Pittsfield, it's the ideal hub for exploring the region's natural beauty and cultural attractions. See ad on page 13.

Holiday Inn & Suites Pittsfield-Berkshires, an IHG Hotel

1 West St. | 413-499-2000 | hiberkshires.com

For Banquet Events or Sleeping Rooms; let the Holiday Inn & Suites be your home away from home.

Bousquet Mountain

100 Dan Fox Dr. | 413-442-8985

bousquetmountain.com

Bousquet Sport

101 Dan Fox Dr. | 413-499-4600

bousquetsport.com

On Pointe Barre & Fitness

740 Williams St. | 413-347-2276

onpointebarre.com

Pittsfield State Forest

1041 Cascade St. | 413-442-8992

bit.ly/3w440b8

Streams, waterfalls, and flowers abound in the 65-acre Pittsfield State Forest. Camping, picnicking, and swimming at scenic Berry Pond. Watch the sun set at striking vistas from the top of Berry Mountain, accessible by automobile from April to December. Thirty miles of trails include the paved three-quarter mile Tranquility Trail.

Radiance Yoga

401 North St. | 413-676-2007 | radiance-yoga.com

We're breaking the "yogi" mold with fun and freedom in every flow. You'll love our therapeutic infrared heat, soothing candlelight, and energized community. Try your first 2 weeks for \$39! BIG NEWS - We're moving to 744 Williams Street! We'll remain open on North Street until Summer 2024. Check our website for updates.



Hotel on North, credit Instagram @doctor.cole

HOTEL ON NORTH



Located in downtown Pittsfield, you will find our elegant, upscale accommodations with a blend of urban sophistication and 19th century charm!

www.hotelonnorth.com

Catering
TO YOUR LIFESTYLE



the
Marketplace

Breakfast | Lunch | Dinner

MARKETPLACEKITCHEN.COM




MULTIPLE LOCATIONS



District Kitchen & Bar



HOT HARRY'S[®]
= FRESH BURRITOS =

37 NORTH STREET, PITTSFIELD • (413) 448-6155
www.hhburritos.com

DINE IN | TAKE OUT | CATERING

LOVE
PITTSFIELD.COM

THE VERY BEST
OF PITTSFIELD
IN ONE PLACE!



West Side Story, Barrington Stage Co, Daniel Rader

Nightlife + Arts • Outdoor Fun • Dining • Shopping
Events Calendar • 3 Hours in Pittsfield + more!

DOWNTOWN
PITTSFIELD e-gift card

ONE CARD - OVER 2 DOZEN LOCATIONS
Retailers - Restaurants - Fitness - Entertainment

Purchase at
downtownpittsfield.com



101 Restaurant & Bar

1 West St. | 413-553-2251 | 101restaurantbar.com

BB's Hot Spot at The Lantern

455 North St. | 413-464-9030 | bbshotspot.com

Brazzucas Market

75 North St. | 413-464-0049 | instagram.com/brazzucasmercadinho

Dottie's Coffee Lounge/Dorothy's Estaminet

438/444 North St. | 413-443-1792 | dottiescoffeelounge.com

Espetinho Carioca

48B North St. | 413-344-9234 | instagram.com/espetinhocarioca413

Hot Harry's Burritos

37 North St. | 413-448-6155 | hotharrysburritos.com | See ad on page 14.

Hot Plate Brewing Co.

1 School St. | info@hotplatebeer.com | hotplatebeer.com

Jae's 7 Winter

7 Winter St. | 413-464-8468 | jaes7winter.com/home

LuLu's Tiny Grocery

137 North St., Crawford Square | 413-692-1110 | bit.ly/48lcSkI

Marie's North Street Eatery and Gallery

146 North St. | 413-442-5100 | facebook.com/mariesnorthstreeteateryandgallery

Marketplace Café

53 North St. | 413-358-4777 | marketplacekitchen.com
Delicious salads, sandwiches, soups, and paninis paired with incredible coffee. With vegan and gluten-free options, there is something for everybody! Online ordering and DoorDash®. See ad on page 14.

Methuselah Bar and Lounge

391 North St. | 413-347-2888 | methbar.com

Otto's Kitchen & Comfort

95 East St. | 413-344-4748 | ottoskitchen.com

Patrick's Pub

26 Bank Row | 413-499-1994 | patrickspubma.com

The Madison Cafe

49 Madison Ave.

South Street Pizza House

148 South St. | 413-499-1690

Thistle & Mirth

44 West St. | 413-441-3480 | thistleandmirth.com

Tito's Mexican Bar & Grill

34 Depot St. | 413-344-4285 | https://titosmexicangrill.restaurant



Dolc'e Rose Beauty Supply

BUY/SELL/TRADE • PARTIES • EVENTS



BOTTOMLESS BRICKS

163 South St. Suite 4
Pittsfield, MA

www.BottomlessBricks.com

PARTS & PIECES • MINIFIGURES®

www.manacrypt.com

Puzzles, Board Games, Plush, Models, Paints
Card Games, Miniatures and More!



Your Tabletop Entertainment Source!



139 West Housatonic St
Pittsfield, MA
(413) 553-3623

ANTIQUES/VINTAGE

Bomb Shack Vintage

307 North St. | instagram.com/bombshackvintage

Circa

436 North St. | 413-445-7200 | circaberkshires.com

Clark Vintage Lighting LLC

342 North St. | 413-344-4491 | clarkvintage.com

BOOKS, CARDS, GIFTS, TOYS, AND FLORAL

Berkshire Museum Shop

39 South St. | 413-443-7171 | berkshireremuseum.org

Bottomless Bricks

163 South St., Suite 4 | 413-344-9259 | bottomlessbricks.com
Your premier source for new, used, and rare LEGO® items, plus unforgettable birthday parties and community events for all ages!
See ad on page 16.

Dory & Ginger

299 North St. | 413-553-4200 | doryandginger.com

Mana Crypt Gaming Center

139 West Housatonic St. | 413-553-3623 | manacrypt.com
See ad on page 16.

Museum Facsimiles Outlet Store

31 South St. at Park Square | 413-499-1818
museumfacsimiles.com | museumoutlets.com

Shire Fire Candle Co.

413-446-9896 | shirefirecandles.com

Soma's Aromas

413-629-9374 | somasaromas.com

The Plant Connector

46 West St. | theplantconnector.com



Bottomless Bricks

Thistle 'n Thorn Floral

393 North St. | 413-347-8014
thistlenthornfloral.com

CONVENIENCE

Lipton Mart Exxon Mobil

580 North St. | 413-442-8861

CANNABIS RETAILER

Berkshire Roots

501A Dalton Ave. | 413-553-9333
berkshireroots.com

Budhaus

239 West St. | 413-281-7394 | budha.us

CLOTHING, SHOES & ACCESSORIES

413Shirts.com

1595 East St. | 413-281-5292 | 413Shirts.com

Deidre's Special Day, Social Butterfly & Prom Central

2 South St., Suite 100 | 413-499-9959 | deidresonline.com

Kidding Around Consignment

700 North St. | 413-464-8527 | facebook.com/KiddingAroundConsignment

Peace Train Tees

2 South St., Suite 150 | 413-499-1890 | peacetraintees.com

Steven Valenti's Clothing

157 North St. | 413-443-2569 | facebook.com/stevenvalenticlothing

HOME FURNISHINGS & BUILDING SUPPLIES

Carr Hardware

547 North St. | 413-443-5611 | carrhardware.com | See ad below.

Dettinger Lumber Company

24 Warren Ter. | 413-442-6916 | dettingerlumber.com

Gutters & Siding, LLC

30 Spring St. | 413-347-9002
413-6GUTTER | guttersnsiding.com

Paul Rich & Sons Furniture Mattresses | Design

242 North St. | 413-443-6467 | paulrich.com

OFFICE

BBE Office Interiors

1595 East St. | 413-442-8217
bbeoffice.com

HEALTH & BEAUTY

Advanced Image Artistry, Inc.

Laurie Ke, RN, BSN, FAAM | 137 North St., Crawford Square
413-822-1776 | advancedimageart.com

Chevuex Hair Clinic

100 North St., Suite 210 | 413-499-1865 | chevuexhairclinic.com

Dolc'e Rose Beauty Supply

305 North St. | 413-329-3100 | bit.ly/4a19e7b

Pampered Pup Dog Day Spa

411 North St. | facebook.com/pamperedpupdogdayspa

Remedy & Culture

90 North St. | 413-770-1507 | remedyandculture.org

The Hair Studio

10 Bank Row | 413-442-6570 | frankshairstudio.com

Silver Solutions MedSpa

75 North St., Suite 170B, Central Block Building
413-441-8453 | silversolutionsmedspa.com | See ad on page 20.

Spirited Shears

359 North St. | 413-499-8886



Deidre's Special Day

CARR
HARDWARE

**Experience Matters.
Trusted Brands.**

**Local Business,
Local Focus**
since 1928.

CARR HARDWARE PITTSFIELD 547 North Street 413.443.5611

carrhardware.com

**Local Culture.
Distilled.**

BERKSHIRE MOUNTAIN DISTILLERS | SINCE 2017

OPEN DAILY | SHEFFIELD, MA
COMPLIMENTARY TASTINGS

SPECIALTY

Berkshire Art Center

141 North St., Suite 2 | 413-298-5252 | berkshireartcenter.org
See ad on page 9.

Berkshire Mountain Distillers

356 South Main St., Sheffield | 413-229-0219
berkshiremountaindistillers.com

An artisanal maker of small-batch, award-winning craft spirits. Visitors are encouraged to stop by BMD's tasting room to sample a full selection. See ad on page 19.

Diane Firtell Designs

dianefirtell.com | Fine art and photography, specializing in custom work

Independent Mobility

453 North St. | 413-499-4846 | imscooters.com

Jean's Cleaners

324 North St. | 413-443-2874 | facebook.com/jeanscleaners

Miller Supply

205 West St. | 413-442-6988 | millerartandframe.com

Nene's Deco

89 Tanner St. | 413-344-7499 | nenesdeco.com

Pittsfield Precious Metals

93 First St. | 413-443-3613 | pittsfieldmetals.com

Plaine's

55 West Housatonic St. | 413-499-0294 | plaines.com

Pup Daddy Productions

49 Euclid Ave. | 413-329-7569 | pupdaddyproductions.com

QuickFix Mobile Repair And More

555 North St. | 413-347-8028
quickfixmobilerepairandmore.com

Schilling TV

215 4th St. | 413-443-9235 | facebook.com/schillingtv

Sally Tiska Rice - Berkshire Rolling Hills Art

75 South Church St., 3rd Floor, Studio 302 | 413-446-8469
sallytiskarice.com

Sally Tiska Rice, a Berkshires local, breathes life into her diverse artworks. Nationally recognized and commissioned for portraits, explore her creations at sallytiskarice.com

Witch Slapped

78 North St. | 413-464-9597 | witch-slapped.com



Best of Berkshires 2023

Best of Berkshires 2023

Thank you for voting us 2 years in a row!!

Enhance your natural beauty. Define what is uniquely you!

- Botox®, Dysport®
- Dermal Fillers
- Hydrafacial
- Sciton BBL
- Dermaplaning
- Kybella
- Microneedling
- Lip Fillers
- Sciton MOXI
- Sciton HALO
- Custom Facials
- Laser Hair Removal

Silver Solutions MedSpa

The Central Block Building • 75 North Street, Pittsfield, MA
413.441.8453 • silversolutionsmedspa.com • f @ silversolutionsmedspa



Where You **BANK** Matters

The simple decision of where you bank impacts the community where you live. Keeping your dollars local drives businesses, innovation, jobs and improves your overall quality of life.



To learn more about the services Berkshire offers, scan the code or visit berkshirebank.com/berkshirebiz

BerkshireBank



Member FDIC. 2/24



Pittsfield celebrates local and national artists - art lovers rejoice!

Pittsfield is home to a vibrant visual arts scene, with public art, artist studios, and the First Fridays Artswalk.

In 2023, the Pittsfield **Let It Shine! Public Art Partnership** was founded to create new murals downtown and in the West Side of Pittsfield. The murals were created by a diverse group of professional artists and reflect and celebrate the Pittsfield community, both our past and our future.

Dominican American artist, **Silvia López Chavez**, painted the first mural of this project, entitled **"Sisterhood,"** a 60 x 30 foot mural on the south-facing side of the Shipton Building at 146-156 North Street. The imagery in Silvia's mural takes inspiration from the spirit of visionary women coming together with joy to imagine and create a bright future for Pittsfield. This mural can't be missed and is enjoyed daily by all who travel northbound through downtown. (See image on front cover.)

Renowned artist **Pops Peterson**, who gained national recognition for his "Reinventing Rockwell" collection, also created two new works for the Riverside Sitting Park as part of Let It Shine! Peterson's first mural, **"Walk with Her,"** was installed in 2021 on College Way in Pittsfield, and features **"Rainbow Ruby"** in a stunning, 20-foot-high reinvention of Norman Rockwell's painting, "The Problem We All Live With."

Other artists who participated in Let It Shine! in 2023 were Berkshire-based artist **Cara Petricca**, Massachusetts-born artist **qwynto**, Argentine American artist **Ramiro Davaro-Comas**, Jamaican American artist **Jasmine Sade** of Springfield, MA, and **Trinity Rivard** of Tampa, Florida.

The Downtown Pittsfield App features a virtual walking tour of over 2 dozen murals in Pittsfield including murals by local artists Michael Carty, Jesse Tobin McCauley, Huckleberry Elling, Frances Chlöe Jones-Whitman, and Stephanie Quetti. There is also a tour of **Artscape's Pittsfield Paintbox Project**, which features over 30 electrical load boxes that have been painted by local artists throughout downtown Pittsfield.

The Bee Queen by Mike Carty, credit Kim Gritman; *We Can Make It* by Stephanie VanBramer; Artswalk Mollie Kellogg Live Painting Demo; *Let the Autumn Shine* by Ramiro Davaro-Comas; *Making Wishes* by Cara Petricca; City Hall *Equality*, credit David Scott; *What's Space Like?* by Brittney Warner

After nightfall, check out the **Berkshire Lightscares virtual walking tour** to see how Lightscares is illuminating and energizing downtown with artistic, coordinated lighting on the exteriors of downtown buildings and public spaces.

May through September, check out the **First Fridays Artswalk virtual walking tour** of art shows, opening receptions, open studios, and art-making opportunities. The First Fridays Artswalk transforms downtown Pittsfield retailers, restaurants, and organizations into art galleries from 5 to 8 pm on the first Friday, and most shows can be viewed for the duration of the month. Check out working-artist studios at **NUarts Studios & Gallery** and the **Clock Tower Artists** and see the artistic process first-hand. Complete your Pittsfield art tour at the **Lichtenstein Center for the Arts**, a city-owned community arts center and gallery which features local and regional artists in rotating art exhibitions.

First Fridays Artswalk joins The City of Pittsfield's **First Fridays at Five** in 2024! Enjoy a Makers Market, Family Fun Zone, live entertainment, and so much more at this new downtown Festival held on the first Friday of the month, May through September, from 5 to 8 pm!

**DOWNTOWN
PITTSFIELD
APP**



**Mural and Public Art Tours
First Fridays Artswalk Tour
Women-Owned Businesses
Dog Friendly Businesses
The "Art" of Food and Retail**

"Gaius" by Michael Carty

App is available for FREE in the App Store and on Google Play



North Street, credit Nick Russo

ACCOUNTING/FINANCIAL

Adelson & Company PC

100 North St. | 413-443-6408 | adelsoncpa.com

Adirondack Payroll Services

65 Bartlett Ave. | 413-236-0950 | adirondackpayroll.com

Apple & Albano PC, CPAs

373 South St. | 413-443-4438 | appleandalbano.com

Braze & Huban, CPAs

55 Wendell Ave. | 413-443-9157 | brazeehuban.com

Francis Investment Consulting Group

66 West St. | 413-499-1501 | francisinv.wfadv.com

Killeen Arace & Quinn, PC

4 Second St. | 413-443-7366 | kaqcpa.com

Lombardi, Clairmont & Keegan

35 Pearl St. | 413-499-3733 | lckcpa.com

Scarafoni Financial Group / Berkshire Fairfield Insurance Agency

128 South St. | 413-443-5300 | scarafonifinancial.com

Smith, Watson & Company, LLP

7 North St., Suite 205 | 413-464-9940 | smithwatson.com

ARCHITECTURE

Blueline Design, Inc.

148 First St. | 413-442-7100 | bluelinedesign.com

Hill Engineers, Architects, Planners, Inc.

50 Depot St., Dalton | 413-684-0925 | hillengineers.com
See ad on page 25.

AUTOMOTIVE

Haddad Dealerships of the Berkshires

130 Pittsfield-Lenox Rd. | 413-445-4535 | haddadauto.com

Discover the Credit Union Difference!

Your dollars are reinvested to keep your community strong, accessible, and welcoming.

GREYLOCK
FEDERAL CREDIT UNION
www.Greylock.org

Insured by NCUA

Need same-day care?

Our Mobile Health Team can care for you with sick visits, minor injury care, and so much more! Visit us online for info & our schedule.

CHP
Berkshires

chpberkshires.org/mobile

ARCHITECTURE • ENGINEERING • CIVIL/SURVEY • PLANNING

Hill
engineers
architects
planners

hillengineers.com

(413)684-0925
50 Depot St.
Dalton, MA. 01226

Best of the Berkshires 2022

servicenet
innovative mental health and human services

grow with us

hiring from entry level to professional staff

413.387.1105 · servicenet.org

Lenco Armored Vehicles

10 Betnr Industrial Drive. | 413-443-7359 | LencoArmor.com

BANKS/ATMS

Adams Community Bank

Pittsfield Branch 660 Merrill Rd. | 413-743-0001 | adamscommunity.com
Experience banking as it should be: personal, convenient, and community-focused.

Berkshire Bank

66 West St. | 800-773-5601
berkshirebank.com | See ad on page 21.

Greylock Federal Credit Union

150 West St. | 725 North St. (inside BMC) | 75 Kellogg St.
413-236-4000 | greylock.org | See ad on page 25.

Lee Bank

180 South St. | 413-445-7270 | leebank.com

MountainOne

111 Silver Lake Blvd. | 855-444-6861 | mountainone.com

NBT Bank

54 North St. | 413-448-6162 | nbtbank.com

Pittsfield Cooperative Bank

70 South St. | 413-447-7304 | pittsfieldcoop.com

BUSINESS SERVICES

AccessPlus

340 McKinstry Ave., Chicopee | 877-4-Access | getaccessplus.com
See ad below.

Berkshire Black Economic Council

33 Dunham Mall, Suite 101 | contact@berkshirebec.org
berkshirebec.org

Berkshire Brochure Display

413-298-3999 | berkshirebrochures.com

Berkshire Graphics, Inc.

239 Wahconah St. #101 | 413-442-3569 | berkshiregraphics.com
See ad below.

Berkshire Innovation Center

45 Woodlawn Ave. | 413-449-1100 | berkshireinnovationcenter.com

CozQuest Creative

323-363-0146 | cozquest.com/about-us

Crescent Creamery

85 S. Onota St. | 413-445-4548 | 800-221-MILK | crescentcreamery.com

Dulye & Co.

100 North St., Suite 402 | dulye.com

Elegant Stitches

237 First St. | 413-447-9452 | elegantstitchesinc.com

Framework Pittsfield Coworking

437 North St. | pittsfieldcoworking.com

Independent Connections

579 Fenn St. | 833-463-7638 | independent-connections.com

Magnetworks

magnetworks.co

Nonprofit Center of the Berkshires

413-441-9542 | npcberkshires.org

Sourcepass

1 Fenn St. | 413-499-0607 | compuworks.biz

CHAMBERS OF COMMERCE

1Berkshire

66 Allen St. | 413-499-1600 | 1berkshire.com

Lenox Chamber of Commerce & Visitor Center

4 Housatonic St., Lenox | 413-637-3646 | lenox.org

Lee Chamber of Commerce

leechamber.org

Trusted Berkshires-Based Internet Provider!

ACCESSPLUS

Fast Fiber Internet

Check Availability!
GetAccessPlus.com
877-4-Access

Canon

Serving Berkshire County as your copier and office supply dealer since 1976.

Affordable office supplies, printers, copiers, and repairs.

BERKSHIRE GRAPHICS INC.
Authorized Canon Dealer
239 Wahconah St., Pittsfield
413-442-3569
www.berkshiregraphics.com



Hot Plate Brewing Co., credit Jake Borden

North Adams Chamber of Commerce

nachamber.org

Southern Berkshire Chamber of Commerce

southernberkshirechamber.com

Stockbridge Chamber of Commerce

stockbridgechamber.org

Williamstown Chamber of Commerce

destinationwilliamstown.org

CIVIC & COMMUNITY

AdLib, Inc.

215 North St. | 413-442-7047 | adlibcil.org

Berkshire Community Action Council

1531 East St. | 14 Maplewood Ave. | 413-445-4503 | bcacinc.org
See ad on page 29.

Berkshire County Arc, Inc.

395 South St. | 413-499-4241 | bcarc.org | See ad below.

Berkshire County Regional Housing Authority

21 Fenn St., 4th Floor | 413-443-7138 | bcrha.com
HUD Approved Housing Counseling Agency, Housing and Consumer Education Center, Foreclosure Prevention, Consumer Services, Dispute Resolution Center (Mediation Services), Tenancy Preservation Program, Housing Search, Youth Services

Berkshire Environmental Action Team

20 Chapel St. | 413-464-9402 | thebeatnews.org

Berkshire Family & Individual Resources

194 Fenn St. | 413-664-9382 | bfair.org

Berkshire Family YMCA

292 North St. | 413-499-7650 | bfymca.org

Berkshire Housing Development Corporation

1 Fenn St. | 413-499-1630 | berkshirehousing.com

Berkshire Immigrant Center

67 East St. | 413-445-4881 | berkshireic.org

Berkshire Natural Resources Council

309 Pittsfield Rd., Suite B, Lenox | 413-499-0596 | bnrc.org

Berkshire Pride

34 Depot St., Suite 207 | info@berkshirepride.org | berkshirepride.org

Berkshire Talking Chronicle WRRS 104.3FM LP

75 South Church St., Suite 201 | 413-442-1562 | ucpwma.org
A radio reading service for the visually impaired. Tune in on Tuesday through Saturday mornings from 9AM to 11AM for the reading of the Berkshire Eagle.

Berkshire United Way

200 South St. | 413-442-6948 | berkshireunitedway.org
By supporting Berkshire United Way, you help us build a stronger and more equitable community where everyone can thrive.

We are YOUR community action agency at work in Berkshire County

Weatherization Programs



Community Programs



Visit www.bcacinc.org to learn about BCAC programs

Heating Programs



Financial Stability Programs



Do You Care for an Adult at Home?

You Could Recieve:

- Monthly Caregiver Stipends
- Nursing & Case Management Oversight
- Assistance with Future Planning



Adult Family Care Program
(413) 464-7262 Ext. 101
www.bcarc.org



Please scan the QR code to support BCAC programs. Thank you!



YMCA Basketball and Track

**Boys and Girls Club
of the Berkshires**

16 Melville St. | 413-448-8258
bgcberkshires.org/bgcpittsfield

**Central Berkshire Habitat
for Humanity**

314 Columbus Ave. | 413-442-0003
berkshirehabitat.org

Christian Center

193 Robbins Ave. | 413-443-2828
christiancenterpittsfield.org

Common Room at Zion Lutheran Church

74 First St. | 413-442-3525 | zionlutheranpittsfield.org

Gladys Allen Brigham Community Center

165 East St. | 413-442-5174 | brighamcenter.org

Guidewire, Inc.

34 Depot St. | 413-443-3295 | guidewireinc.org

Jewish Federation of the Berkshires, Inc.

196 South St. | 413-442-4360 | jewishberkshires.org

Living in Recovery

75 North St., McKay Street Entrance | 413-570-8243
livinginrecoverypittsfield.org

Mill Town Foundation

100 West St., Suite 210 | andy@milltownfoundation.org
milltownfoundation.org

NAMI Berkshire County

333 East St., Room 417 | 413-443-1666 | namibc.org

Pittsfield Community Design Center

429 North St. | hello@pittsfieldcommunity.design
pittsfieldcommunity.design

Pittsfield Parade Committee

P.O. Box 1738 | 413-447-7763 | pittsfieldparade.com

Roots Rising

P.O. Box 1805 | 413-344-0816 | rootsrising.org

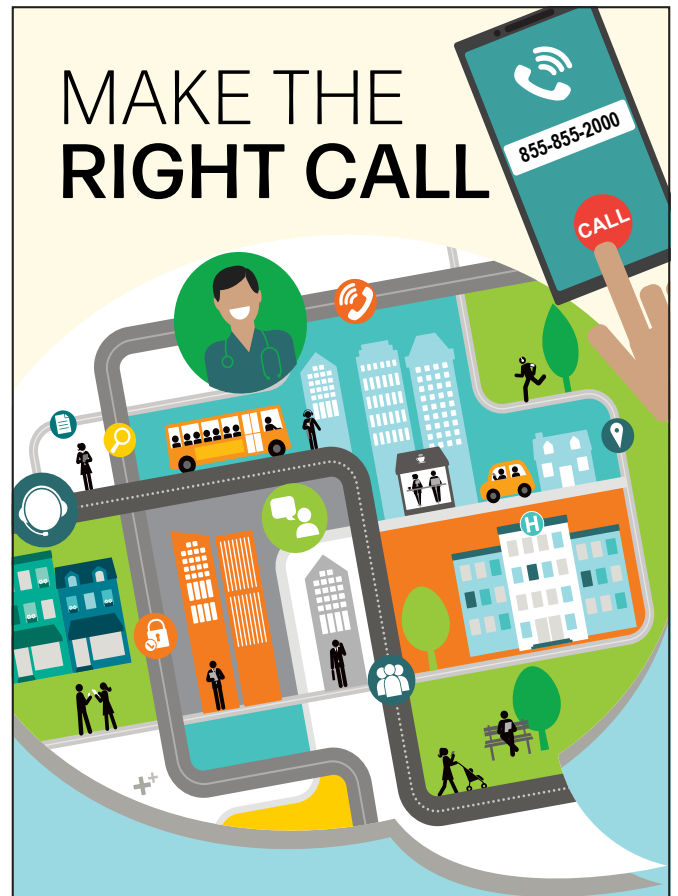
Rotary Club of Pittsfield

1 West St. | 413-448-8224 | rotarypittsfield.org

Retired Senior Volunteer Program (RSVP)

16 Bartlett Ave. | 413-499-9345
cityofpittsfield.org/departments/rsvp
Berkshire County's RSVP provides recruitment, training, and placement of persons 55 years of age and over as volunteers.

MAKE THE RIGHT CALL



855-855-2000

The **BHS NURSE LINE** is a *free* community service that can help connect you to the care you need. Our nurses will guide you to the right services at the right time-- in the office, at Urgent Care, or in the Emergency Room.

Scan the QR Code or visit
our website to learn more.



Berkshire Health Systems

ServiceNet, Inc.

139 North St. | 413-442-4003 | servicenet.org | See ad on page 25.
ServiceNet provides 100+ mental health and human service programs across western Massachusetts – helping people live their lives to the fullest.

Soldier On

Corporate Office 290 Merrill Rd. | info@wesoldieron.org
wesoldieron.org

UCP of Western Massachusetts

208 West St. | 413-442-1562 | ucpwma.org

EDUCATION

Berkshire Community College

1350 West St. | 413-236-1000 | berkshirecc.edu | See ad below.

OLLI (Osher Lifelong Learning Institute at Berkshire Community College)

1350 West St. | 413-236-2190 | berkshireolli.wildapricot.org
See ad on page 33.

EMPLOYMENT

MassHire Berkshire Career Center

160 North St. | 413-499-2220 | masshireberkshirecc.com

Molari Employment and Healthcare Services

166 East St. | 413-499-4546 | molariinc.com

ENGINEERING/MANUFACTURING

Interprint, Inc.

101 Central Berkshire Blvd. | 413-443-4733 | interprint.com

J.H. Maxymillian, Inc.

1801 East St. | 413-499-3050 | maxymillian.com
J. H. Maxymillian, Inc. provides award-winning heavy civil and environmental construction services throughout western Massachusetts.

ENTREPRENEURSHIP

EforAll Berkshire County

437 North St. (inside Framework)
833-336-7255 x7209
eforall.org/berkshire-county

FUNERAL

Dery Funeral Home

54 Bradford St. | 413-443-9151
deryfuneralhome.com

GRAPHIC DESIGN & PRINTING

RB Design Co.

regina@rbdesignco.com

Qualprint

3 Frederico Dr. | 800-547-7468 | qualprint.com | See ad on page 34.

INSURANCE

Greylock Insurance Agency

5 Cheshire Rd., Suite 26 | 150 West St. | 413-443-5943
greylockinsurance.com

Guardian Life Insurance Company of America

700 South St. | 413-499-4321 | guardianlife.com
See ad on page 35.

Pearson Wallace Insurance, LLC

222 South St., Suite 201 | 413-464-9390 | pearsonwallace.com

Scarafoni Financial Group / Berkshire Fairfield Insurance Agency

128 South St. | 413-443-5300 | scarafonifinancial.com

Wheeler & Taylor, Inc.

402 East St. | 413-448-8224 | wheelerandtaylor.com



Downtown Has Heart,
credit Amanda Rae Busch

AFFORDABLE · HIGH QUALITY · CONVENIENT



BCC offers more opportunity and less student debt.
www.berkshirecc.edu



BERKSHIRE
COMMUNITY COLLEGE



Learn more and register
at berkshireolli.org

Join over 1,450 of the most
creative, engaged, and active
adults in the Berkshires for
non-credit courses, events,
and community.



Classes
Trips
Special Events

LEGAL

Aaronson & Mach, P.C.

57 Wendell Ave. | 413-499-1200 | aaronsonmach.com

Cohen Kinne Valicenti & Cook LLP

28 North St. | 413-443-9399 | cohenkinne.com

George & McCarthy PC

2 South St. | 413-499-4400

Michael MacDonald, Esq.

550 Cheshire Rd. | 413-442-6926

MEDIA

Berkshire Eagle

75 South Church St. | 413-447-7311 | berkshireeagle.com

Photonics Media / Laurin Publishing Co., Inc.

100 West St. | 413-499-0514 | photonics.com

Townsquare Media Berkshire

211 Jason St. | 413-499-3333 | live959.com

MEDICAL SERVICES

Berkshire Health Systems / Berkshire Medical Center

725 North St. | 413-447-2000 | berkshirehealthsystems.org

See ad on page 31.

Berkshire Orthopaedic Associates, Inc

24 Park St. | 413-499-6600 | berkshireorthopaedics.com

Berkshire Smile Studio / Dr. Syed

195 South St. | 413-499-3440

CHP Berkshires

Pittsfield Neighborhood Health Center 510 North St., Ste. 1 | 413-447-2351

Berkshire Pediatrics 777 North St., Suite 305 | 413-499-8531

Mobile Health Units | 413-528-0457 | chpberkshires.org

See ad on page 25.

Family Practice Associates

20 Elm St. | 413-442-1019 | fpadoctors.com

Hillcrest Educational Centers

788 South St. | 413-499-7924 | hillcrestec.org

Mountain View Home Care, Inc.

137 North St., Suite 202 | 413-464-7524 | mtviewhomecare.com

Pittsfield Vision Associates

217 South St. | 413-499-3797 | pittsfieldvision.com

SaVida Health

184 North St., Suite 202 | 413-236-9100 | savidahealth.com

MOVING & STORAGE

All-Ways Moving & Storage, Co., Inc.

241 W. Housatonic St. | 413-499-1577 | allwaysmovingstorage.com

MI-BOX of Central & Western Massachusetts

241 Route 12., S Fitzwilliam, NH 03447 | 978-300-0404 | getmibox.com

REALTY, PROPERTY MANAGEMENT

Allegrone Companies

Berkshire Design Center, 150 Pittsfield Rd., Suite A, Lenox

413-997-9200 | allegrone.com



At Guardian, we're proud of our commitment to the Berkshires.

We're always looking to attract, develop, reward, and retain the best and brightest talent. Consider a career with Guardian. We offer comprehensive benefits, competitive compensation, and a range of professional development options.

The Guardian Life Insurance Company of America | guardianlife.com

Guardian is an equal opportunity employer. All qualified applicants will be considered for employment without regard to age, race, color, creed, religion, sex, affectional or sexual orientation, national origin, ancestry, marital status, disability, military or veteran status, or any other classification protected by applicable law.

Guardian® is a registered trademark of The Guardian Life Insurance Company of America.

Copyright © 2024 The Guardian Life Insurance Company of America
2024-168910 (Exp. 03/26) | New York, NY



Qualprint is proud to be celebrating over 60 years in business. Thank you to our fabulous customers, dedicated employees, fantastic partners and suppliers, and to our supportive community in The Berkshires!

We look forward to serving our customers and community for many years to come.

Print • Promotional Products • Direct Fulfillment • Much More!



Did You Know?
Soy-based inks provide
Earth-friendly alternatives: safer for
the environment and for our people.





Downtown, credit
Good Bites & Glass Pints

Brotherhood Building

141 North Street | info@bluesware.com

Capitol Square Associates

379 North St. | 413-442-5568

CT Management Group

37 Main St., North Adams
413-664-4539 | ctmanagementgroup.com

David J. Tierney Jr., Inc.

169 Gale Ave. | 413-499-7490
davidjtierneyjrinc.com

Mill Town Capital

100 West St., Suite 210 | info@milltowncapital.com | milltowncapital.com

Skytop Properties

395 North St., Suite 230 | 413-450-1366 | admin@skytopre.com

Steve Oakes

Crawford Square | contactsteveoakes@gmail.com

TKG Real Estate

137 North St. | 413-499-1410 | tkgre.com

RELIGIOUS INSTITUTIONS

Cathedral of the Beloved

413-344-8262 | cathedralofthebeloved.org

Congregation Knesset Israel

16 Colt Rd. | 413-445-4872 | knessetisrael.org

First United Methodist Church

55 Fenn St. | 413-499-0866 | fumcpittsfield.org

St. Joseph's Church

414 North St. | 413-445-5789 | stjoepittsfield.com

St. Stephen's Episcopal Church

67 East St. | 413-448-8276 | ststephenspittsfield.org

Unitarian Universalist Church of Pittsfield

175 Wendell Ave. | 413-443-7903 | uupittsfield.org

United Church of Christ Pittsfield

110 South St. | 413-442-7357 | southchurchpittsfield.org

Zion Lutheran Church, ELCA

74 First St. | 413-442-3525 | zionlutheranpittsfield.org

SECURITY

New England Dynamark Security

55 Church St. | 413-442-5647 | nedynamark.com

TRANSPORTATION

AIR

Pittsfield Municipal Airport

cityofpittsfield.org/departments/airport
Regional general aviation airport, owned and operated by the City of Pittsfield, offers business and casual travel access to the region via private and chartered aircraft ranging from single engine piston to multi-engine jet. The airport also has a flight instructor at the Fixed Based Operator, Lyon Aviation, and scenic flights available.



The Berkshire Flyer, credit
Stephanie Zollshan/The Berkshire Eagle

GROUND

The Berkshire Flyer (July-September)

Intermodal Transportation Center
1 Columbus Ave.

amtrak.com/berkshire-flyer-train

Skip the Thruway and take the view way to The Berkshires this summer. Bypass stop-and-go traffic as you roll along the Hudson River valley. The Berkshire Flyer offers seasonal weekend service to and from New York's Moynihan Station to Pittsfield, MA.

Berkshire Regional Transit Authority

Intermodal Transportation Center

1 Columbus Ave. | 413-499-2782 | berkshirerta.com

Transportation hub of the Berkshires, offering train, bus, and taxi service. Peter Pan or Greyhound bus (Intercity); Amtrak train (Lake Shore Limited); BRTA buses (Berkshire County wide)

UTILITIES/ENERGY

Lipton Energy

458 South St. | 413-443-9191 | liptonenergy.com

Mirabito Energy

25 Downing Industrial Pkwy. | 413-637-1834 | mirabito.com

Berkshire Lightscapes

*Transforming
Downtown Pittsfield
with Lights!*

For more information
on lighting up your
building, contact
Downtown Pittsfield, Inc. at
info@downtownpittsfield.com

DOWNTOWN DIRECTORY

*Denotes Downtown Pittsfield, Inc. Membership

ACCOUNTING/FINANCIAL - P. 24

*Adelson & Company PC
*Adirondack Payroll Services
Ameriprise Financial Services
*Apple & Albano PC
Berkshire Merchant Services
Berkshire Wealth Advisors of Raymond James
Boston Harbor Wealth Advisors | Raymond James
*Brazee & Huban, CPAs
Dana Carpenter, Certified Financial Planner
Dollars & Sense
Edward Baptiste, Liberty Advisors
Edward Jones
Elie El Saddik, CPA
Ernest L. Kirk Accounting
Financial Firebird Corporation
*Francis Investment Consulting Group, Inc.
H&R Block
Jackson Hewitt Tax Service
Jayson Tanzman, Financial Advisor
KB Accounting
*Killeen Arace & Quinn, PC
Kirby Investment Strategies, LLC
Kushi & Company, PC
*Lombardi, Clairmont & Keegan,
Certified Public Accountants
Northwestern Mutual
October Mountain Financial Advisors
Paul J. Zdanis C.P.A.
Principal Financial Group
RBC Wealth Management
*Scarafoni Financial Group /
Berkshire Fairfield Insurance
*Smith, Watson & Company, LLP
Tax Comp, Inc.
Universal Payroll Associates, Inc.
Wells Fargo Advisors

ANIMAL CARE

*Pampered Pup Dog Day Spa

ARCHITECTURE - P. 24

Barry Architects, Inc.
Berkshire Design, Inc. & Bradley Architects, Inc.
*Blueline Design, Inc.
EDM - architecture, engineering, & management
Group AU (Architecture + Urbanism)
*Hill Engineers, Architects, Planners, Inc.

AUTOMOTIVE - P. 24

Advance Auto Parts
Almeida Auto Body
Art Johnson Motor Car Co.
Berkshire County Auto Repair
Carberry Auto Parts
Draeger Ignition Interlock
Duder's Garage
Firestone Complete Auto Care
Fred Santora Auto Repairs
*Haddad Dealerships of the Berkshires
Haddad Nissan
Ken's Auto Upholstering Co.
*Lenco Armored Vehicles
*Lipton Mart
New England Automotive
O'Reilly Auto Parts
Pittsfield Tire & Auto Service
Rapid Radiator Repair
*South Street Services
Sunoco

BANKS/ATMS - P. 26

*Adams Community Bank
*Berkshire Bank
*Greylock Federal Credit Union
*Lee Bank
*MountainOne
MyCom Federal Credit Union
*NBT Bank
*Pittsfield Cooperative Bank
TD Bank

BUSINESS SERVICES - P. 26

*1Berkshire
*AccessPlus
AH&M Marketing Communications
B&G Restaurant Supply
*Berkshire Black Economic Council
Berkshire Business and Professional Women
*Berkshire Brochure Display
*Berkshire Innovation Center
Berkshire Merchant Services
Clayson Creative
*CozQuest Creative
*Crescent Creamery
*Dulye & Co./ Dulye Leadership Experience
*EforAll Berkshire County
*Elegant Stitches
*Framework Pittsfield Coworking
*Guelce Collaborative Marketing
*Independent Connections
*Lee Chamber of Commerce
*Lenox Chamber of Commerce
*Magnetworks
Massachusetts Small Business
Development Center
*Mill Town Foundation
*Nonprofit Center of the Berkshires
*North Adams Chamber of Commerce
Rock Business Solutions, Inc.
Service Fidelis
*Southern Berkshire Chamber of Commerce
*Stockbridge Chamber of Commerce
*Williamstown Chamber of Commerce

CIVIC & COMMUNITY - P. 28

*1Berkshire
18 Degrees Family Services for Western MA
*AdLib, Inc.
Berkshire AA Intergroup
*Berkshire Community Action Council
Berkshire Conservation District
*Berkshire County Arc, Inc.
Berkshire County District Attorney's Office
Berkshire County Juvenile Court
Berkshire County Kids' Place
*Berkshire County Regional Housing Authority
Berkshire County Retirement System
*Berkshire Environmental Action Team
*BFAIR, Inc. (Berkshire Family &
Individual Resources)
*Berkshire Family YMCA
*Berkshire Housing Development Corporation
*Berkshire Immigrant Center
*Berkshire Natural Resources Council
Berkshire Pathways / Viability, Inc
*Berkshire Pride
Berkshire Regional Planning Commission: BRPC
*Berkshire Talking Chronicle WRRS 104.3FM LP
*Berkshire United Way
*Boys and Girls Club of the Berkshires
*Central Berkshire Habitat for Humanity
Child Care of the Berkshires
*Christian Center
*City of Pittsfield

Civitan Club of the Berkshires
*Common Room at Zion Lutheran Church
DTA Pittsfield (Massachusetts Department of
Transitional Assistance)
Department of Children and Families
*Downtown Pittsfield Cultural Association
*Downtown Pittsfield, Inc.
Feigenbaum Foundation
*Gladys Allen Brigham Community Center
Goodwill Industries of the Berkshires and
Southern Vermont
*Guidewire, Inc.
Healthy Families - Child Care of
the Berkshires
*Hillcrest Educational Centers
International Brotherhood of
Electrical Workers
Irish American Club of Berkshire County
*Jewish Federation of the Berkshires, Inc.
Latinas413
*Living In Recovery
Massachusetts Small Business
Development Center
Massachusetts Rehabilitation Commission
Massachusetts Teachers Association
*Mill Town Foundation
*NAMI Berkshire County
OUR Resurge / Roots & Dreams and
Mustard Seeds Inc.
Pathlight / Autism Connections
*Pittsfield Beautiful
*Pittsfield Community Design Center
Pittsfield Masonic Temple
*Pittsfield Parade Committee
Pittsfield Public Schools
Administration Building
Pittsfield Retirement Board
Pregnancy Support Services of
Berkshire County, Inc.
Ralph J. Froio Senior Center
ReDefine Multicultural Community
Support Center
*Representative Tricia Farley-Bouvier
*Roots Rising
*Rotary Club of Pittsfield
*Retired Senior Volunteer Program (RSVP)
*ServiceNet, Inc.
Seven Hills Child Care Resources
*Soldier On
South Community Food Pantry
Stewards of H.O.P.E.
U.S. Representative Richard Neal
*UCP of Western Massachusetts
(United Cerebral Palsy)
U.S. Social Security Office
Veterans Community Care Center
Viability, Inc
Western Massachusetts Recovery
Learning Community
Whole Heart Homecare, LLC
WIC (Berkshire North WIC)
Wildflower Alliance

COMPUTERS, COPIERS & TECHNOLOGY - P. 26

*AccessPlus
Anteris
*Berkshire Graphics, Inc.
Bug Busters Computer Services
DataArt Pittsfield
Dominion Dealer Solutions
*Independent Connections
MacFarlane Office Products, Inc.
*QuickFix Mobile Repair and More
Repeat Business Systems
Rock Business Solutions, Inc.
*Sourcepass
Synagex Modern IT
VoiceAGE Clinical Dictation

DINING - P. 15

American

*101 Restaurant & Bar
District Kitchen + Bar
Highland Restaurant
Hot Dog Ranch
*Marketplace Café
*Otto's Kitchen & Comfort
*Patrick's Pub
Rem Roc's Fried Chicken & Soul Food
Soda Chef

Asian

Golden Phoenix
*Jae's 7 Winter
Vong's Thai Cuisine

Bar

*101 Restaurant & Bar
District Kitchen + Bar
*Dorothy's Estaminet
Highland Restaurant
Hot Dog Ranch
*Hot Plate Brewing Co.
*Madison Cafe
*Methuselah Bar and Lounge
*Patrick's Pub
Panchos Mexican Restaurant
RJ'S Restaurant
*Thistle & Mirth
*Tito's Mexican Bar & Grill

Café

*Dottie's Coffee Lounge
*LuLu's Tiny Grocery
*Marie's North Street Eatery and Gallery
*Marketplace Café

Coffee & Baked Goods

*Dottie's Coffee Lounge
Dunkin Donuts
*LuLu's Tiny Grocery
*Marketplace Café
Sherri and Cindy's Coffee Shop (at the
Intermodal Center)

Deli

Angelina's Submarine
Doc's Deli
*Marie's North Street Eatery and Gallery
Subway

Fast Food

Burger King
Krispy Krunchy Chicken (inside A-Mart)

Gastropub

District Kitchen & Bar
*Methuselah Bar and Lounge

Ice Cream

Ben & Jerry's
King Cone Soft Serve (seasonal)
What's the Scoop? (Beacon Cinema lobby)

Indian

House of India

Italian

Brooklyn's Best Italian Eatery
& Specialty Market
Highland Restaurant
RJ'S Restaurant
Trattoria Rustica

Latin American

*Brazucas Market
*Espetinho Carioca

*Hot Harry's Burritos
Panchos Mexican Restaurant
Placita Latina Restaurant & Market
*Tito's Mexican Bar & Grill

Pizza

Empire Pizza
Liberty Pizza
*South Street Pizza House
*Thistle & Mirth

Specialty

*BB's Hot Spot at "The Lantern"

Vegan

Thrive: A Fresh Cuisine Diner

EDUCATION - P. 32

*Berkshire Art Center (BAC)
*Berkshire Community College
Berkshire Enterprises
*Berkshire Music School
Big Head Books, LLC
Cantarella School of Dance
Mildred Elley Pittsfield Campus
*Osher Lifelong Learning Institute
Ready Set Learn Preschool
Terpsichore Dance Center
William Stickney Pittsfield Adult Learning Center

EMPLOYMENT - P. 32

*MassHire Berkshire Career Center
*MOLARI Employment and HealthCare Services

ENTERTAINMENT/THEATER/ CULTURE/ARTS - P. 6

Albany Berkshire Ballet
*Art In The Berkshires
Arts in Recovery for Youth (AIRY)
*Artscape: The Public Art Committee of the City of Pittsfield
*Barrington Stage Company
*Berkshire Art Association
*Berkshire Art Center (BAC)
*Berkshire County Historical Society at Arrowhead
*Berkshire Lightscapes
*Berkshire Museum
*Berkshire Music School
*Berkshire Theatre Group / Colonial Theatre
*Berkshires Jazz, Inc.
*Clock Tower Artists
*Diane Firtell Designs
*Eagles Community Band
empty set projects (art studio/gallery)
*First Fridays Artswalk
*Hancock Shaker Village
*Lichtenstein Center for the Arts
*NUarts Studios & Gallery
*Phoenix Theatres Beacon Cinema
Pittsfield Shakespeare in the Park
SMI, Inc. Moscow Ballet
Samuel Harrison House
South Mountain Concerts
*THECOLLAB by Guelce Collaborative Marketing

FARMERS MARKET - P. 12

*Pittsfield Farmers Market

FUNERAL - P. 33

*Dery Funeral Home
Devanny-Condon Funeral Home
Dwyer Funeral Home
Dwyer Wellington Family Funeral Home
Flynn & Dagnoli-Bencivenga Funeral Home

HEALTH, BEAUTY & FITNESS - P. 12 & P. 19

A Massage Now
Abbey Cutters
*Advanced Image Artistry, Inc.,
Laurie Ke RN, BSN, FAAM
All Star Cuts 2 Barber Shop
Ann's Beauty Salon
Aruni Nan Futuronsky Life Works Coach
Balance & Bliss Wellness, LLC
Beloved Massage Therapy by Carissa
*Berkshire Fitness & Wellness Center
Berkshire GreenLeaf & Wellness®, LLC
Berkshire Healing Arts
*Berkshire Nautilus
*Berkshire Yoga Dance & Fitness
*Bousquet Sport
*Cheveux Hair Clinic
Davis Personal Training
*Dolc'e Rose Beauty Supply
Essentials Skin Science
Faceframe Collective: Lemon Lash Academy + Magnolia Hair & Co
Four One Three Salon
Franklin Barbershop
*Hair Studio, The Hair Unlimited
Healthy Fitness LLC.
Hollywood Nails
Indulgence Salon
Intradermal Designs
Justin Rivelli's Physique Transformations
Kristie Hartig Massage
Lisa A Pixley Licensed Electrologist LLC
Looks By Ashleigh, Eyelash Technician
Luna Faun Bodywork & Botanicals
Massage by JoAnna, Therapeutic Massage by JoAnna M. Barzottini, LMT
Mindful Berkshires
Mirror Images Spa & Salon
MR Barbers
*On Pointe Barre & Fitness
Psychic Studio
*Radiance Yoga
*Remedy & Culture
*Silver Solutions MedSpa
Skin + Tonix
*Spirited Shears
Styles by Matina
The Recovery Room
The Suites Hair Scene
Union Street Tattoo
Uplift Barber Studio
Upstreet Barber Shop
Williams Massage

HOME IMPROVEMENT, FURNISHINGS, & SERVICES - P. 18

Aaron's
Affordable Bike Repair
Berkshire Plate Glass
*Carr Hardware
*Circa
Custom Window Treatments
*Dettinger Lumber Company
Fresh Start Cleaning
George's Shoe Repair
*Gutters & Siding, LLC
*Jean's Cleaners
LOCAL Appliance Repair
Linden Street Laundromat
Martino Glass Company, Inc
*New England Dynamark Security
North Street Coin-Op Laundromat
*Paul Rich & Sons Home Furnishings + Design
Pittsfield Tailor Shop for Ladies & Men
QKB Kitchen & Bath Design Center
Rent-A-Center

INSURANCE - P. 33

*Berkshire Fairfield Insurance Agency, LLC / Scarafoni Financial Group
*Greylock Insurance Agency
*Guardian Life Insurance Company of America
Health New England - Berkshire
MountainOne Insurance
New York Life
Northwestern Mutual
*Pearson Wallace Insurance, LLC
Primerica
*Wheeler & Taylor, Inc.

LEGAL - P. 34

*Aaronson & Mach, P.C.
Albert J Cimini & Associates
Attorney Marc C. Vincelette
Attorney Shannon C. Plumb
Barry & Doyle, Attorneys at Law
Barry & Kinzer, LLP Attorneys at Law
Benjamin Smith & Associates, P.C.
Berkshire County District Attorney's Office
Berkshire Hills Mediation Services
Brennan Law Offices
Brian Litscher, Attorney at Law
Cain Hibbard & Myers PC
Campoli, Montealeone & Mozian, P.C.
Central West Justice Center
*Cohen Kinne Valicenti & Cook LLP
Community Legal Aid
Courtney, Lee & Hamel P.C.
Donovan O'Connor & Dodig, LLP
Drennan Law Offices
Elizabeth J. Quigley Law Office
Employment Law Center of Western MA / Attorney Bernard J. Romani
Gable & Mercier, P.C.
*George & McCarthy PC
Hashim & Spinola, Attorneys at Law
Hochberg Law Offices
Holly Rogers, Attorney at Law
Horan Law LLC
Lance S. Chavin Esq.
Lanny M Zuckerman Attorney at Law
Law Offices of Katherine J. Bierwas
Law Office of Mitchell I. Greenwald
Martin & Oliveira, LLC
*Michael MacDonald, Esq.
Nuciforo Law Group, LLC
Peter J. Sturgeon, Attorney at Law
Raymond Jacob, Attorney at Law
Richard J. O'Brien, Attorney at Law
Righi Law and Esquire Realty
Scott A. Westcott, Attorney
Scott P. Clark, PC
Smith Green & Holmes, LLP
The Law Office of Douglas James Rose
The Law Offices of Jack E. Houghton Jr.
The Law Offices of Jonathan A. Broverman
The Law Offices of Sherwood Guernsey
The Law Office of Timothy J. Shugrue of Pittsfield

LIBRARIES - P. 7

*Berkshire Athenaeum Public Library

LODGING - P. 12

*Best Western Plus Berkshire Hills Inn & Suites
Hilton Garden Inn
*Holiday Inn & Suites Pittsfield-Berkshires, an IHG Hotel
*Hotel on North
The Central Downtown Inn + Suites

ENGINEERING/MANUFACTURING - P. 32

1st Climate Solutions
Blue Q

Electro Magnetic Applications, Inc. / EMA® Massachusetts
General Dynamics Mission Systems
Hallowell EMC
*Interprint, Inc.
Intertek Plastics Technology Laboratories
*J.H. Maxymilian, Inc.
M.J. Gordon Company
NTS Pittsfield

MARKETING, GRAPHIC DESIGN & PRINTING - P. 33

AH&M Marketing Communications
Berkshire Print Shop
Courier Printing, Inc.
Dominion Dealer Solutions
*Guelce Collaborative Marketing
*Qualprint
*RB Design Co.
Salvo Creative
W J Blueprint & Digital Graphics

MEDIA - P. 34

*Berkshire Eagle, The
Berkshire Edge, The
Berkshire Film and Media Collaborative
Berkshire Trade & Commerce
Clayson Creative
iBerkshires
Kids Super Journal
One Eighty Media, Inc.
*Photonics Media / Laurin Publishing Co., Inc.
Pittsfield Community Television / PCTV
Star 101.7 WBRK - FM
*Townsquare Media Berkshire / LIVE 95.9
Vintage Digital Revival, LLC
WAMC Northeast Public Radio

MEDICAL SERVICES - P. 34

510 Medical Walk-In
Adaptive Prosthetics and Orthotics, LLC.
Advocacy for Access
Allegiance Nursing
Amanda Raymond, LMHC
Amedisys Home Health / Associated Home Care
Balco Partners
Behzad Parhizgar, MD, Dermatology
Berkshire Clinical Associates
Berkshire Cosmetic & Reconstructive Surgery Center
Berkshire Denture Repair
Berkshire Ear, Nose, Throat & Audiological Associates, P.C.
Berkshire Fallon Health Collaborative
Berkshire GreenLeaf & Wellness®, LLC,
Marlee Tyska, MSW, LICSW
Berkshire Harm Reduction
Berkshire Healing Arts
*Berkshire Health Systems / Berkshire Medical Center
Berkshire Health Urgent Care
Berkshire Hypnosis
Berkshire Integrative Orthodontics
BMC Hearing & Balance Center
Berkshire Healthworks Employee Assistance Program
BMC Internal Medicine Residents' Practice
BMC Occupational Health
BMC Outpatient Imaging and Testing Center
Berkshire Medical Center Audiology & Hearing Center
Berkshire Medicine
Berkshire Memory Services
*Berkshire Orthopaedic Associates, Inc.
Berkshire Osteopathic Health
*Berkshire Pediatrics
Berkshire Place
*Berkshire Smile Studio/ Shakil U. Syed, DDS

Brien Center, The
 Center for Chiropractic Care
 Center For Healing Interventions Inc (CHI)
 Central Berkshire Dentistry: Dr. Vladimir
 Nazarov, DMD
 CHP Neighborhood Dental Center
 *CHP Neighborhood Health Center
 CleanSlate Outpatient Addiction Medicine
 Clinical & Support Options Inc.
 Community First Therapy and Consulting, LLC
 David M. Martin, D.C.
 Dolce Dental
 Dr. James B Nesti, DMD
 Dr. Matheau D. Schiff, D.M.D.
 Edwin J. Helitzer, DMD
 Excel Nursing Services /
 Excel Home Care Services
 *Family Practice Associates
 FIRST Steps Together - CHD
 Francis F. McCarthy, D.M.D., P.C.
 Gandara Mental Health Center
 Giulio Cavalli, M.D., Otolaryngologist
 Greylock Audiology Hearing and Balance Center
 Hillcrest Center for Family Health (BMC)
 *Hillcrest Educational Centers
 Home Care Services of Massachusetts
 Home Instead Senior Care
 Hospice of Western & Central Massachusetts
 Innovative Care Partners – CHD
 Integritus Healthcare Systems
 John Steven Cella, D.D.S.
 Laurie Swiatek, LICSW
 Mary N. Cella, D.D.S.
 Meandro Orthodontics
 Michael J. Williams, DMD, P.C. Periodontics
 and Dental Implant Reconstruction
 MindCare Agency PC
 *Mountain View Home Care, Inc.
 Naileen Momin, AuD. Audiologist
 New Direction Women's Center
 New Life Chiropractic
 Operation Better Start
 Orthotics & Prosthetics Labs, Inc.
 Philip F. Mamolito, D.M.D.
 Pittsfield Cardiology PC
 Pittsfield Community Acupuncture
 Pittsfield Dental Center
 Pittsfield Medical Associates
 Pittsfield Veterans Association Outpatient Clinic
 *Pittsfield Vision Associates
 Pure Harmonies Body Works & Massage
 Quest Diagnostics
 Residences at 89 South
 Right Choice Health Group
 *SaVida Health
 Shire Acupuncture, LLC
 Sugar Hill at Home
 Tapestry
 Thomas J. Sakshaug, D.D.S.
 Tiffany Therapy, LLC
 Whole Heart Homecare, LLC
 Vertava Health of Pittsfield
 Visiting Angels
 VIM Berkshires (Volunteers in Medicine)
 VoiceAGE Clinical Dictation

MOVING & STORAGE - P. 35

*All-Ways Moving & Storage, Co., Inc.
 *MI-BOX of Central & Western Massachusetts

OUTDOOR - P. 44

Action Sports & Travel
 Affordable Bike Repair
 Ashuwillticook Rail Trail
 Berkshire Bike and Board
 Berkshire Community Rowing
 *Berkshire Natural Resources Council /
 The Boulders Reserve / Mahanna Cobble Trail

Berkshire U-Drive Boat Rental
 *Bousquet Mountain
 *Bousquet Sport
 Burbank Park at Onota Lake
 Canoe Meadows Wildlife Sanctuary / Mass
 Audubon
 Downtown Loop
 Garden, The
 *Hancock Shaker Village
 Onota Boat Livery
 Pittsfield Skate Plaza
 Pittsfield State Forest
 *Plaine's Bike Ski Snowboard
 Pontoosuc Lake Park
 Springside Park

REALTY & PROPERTY MANAGEMENT - P. 35

*Allegrone Companies
 Appraisal Group of Berkshire County
 Barb Hassan Realty
 Berkshire County Board of Realtors
 *Berkshire County Regional Housing Authority
 Berkshire Hathaway HomeServices /
 Barnbrook Realty
 Berkshire Real Estate
 Blueprint Property Group
 *Brotherhood Building
 *Capitol Square Associates
 Cavalier Management Company
 Century 21 North East
 *CT Management Group
 *David J. Tierney Jr., Inc.
 Home Maintenance Alliance
 Jodi & Paul Tartell
 *Mill Town Capital
 New Amsterdam Apartments
 Preservation Housing Management / Central
 Annex / Union Court
 *Skytop Properties
 Steepleview Realty
 *Steve Oakes
 *TKG Real Estate/The Kinderhook Group
 Teton Management Corporation
 Union Court Apartments

RELIGIOUS INSTITUTIONS - P. 36

A vinha Church Berkshires
 *Cathedral of the Beloved
 *Congregation Knesset Israel
 First Baptist Church
 First Church of Christ Scientist
 *First United Methodist Church
 Iglesia Fuente de Salvacion Misionera Inc.
 St. Charles Borromeo Catholic Church
 St. George Greek Orthodox Church
 *St. Joseph's Church
 *St. Stephen's Episcopal Church
 Temple Anshe Amunim
 Truth Tabernacle U. P. C.
 *United Church of Christ Pittsfield
 *Unitarian Universalist Church of Pittsfield
 *Zion Lutheran Church of Pittsfield

SHOPPING - P. 17

*413Shirts.com
 Aaron's
 Action Sports & Travel
 Advance Auto Parts
 Aerus Electrolux
 A-Mart
 Berkshire Bike and Board
 B & G Restaurant Supply
 *BBE Office Interiors
 Berkshire International Market
 *Berkshire Mountain Distillers
 *Berkshire Museum Shop
 *Berkshire Roots

Berkshire Running Center
 Big Y
 *Bomb Shack Vintage
 *Bottomless Bricks
 *Budhaus
 *Carr Hardware
 *Circa
 *Clark Vintage Lighting LLC
 Cumberland Farms
 CVS
 *Deidre's Special Day, Social
 Butterfly & Prom Central
 *Dettinger Lumber Company
 *Dolc'e Rose Beauty Supply
 *Dory & Ginger
 Family Dollar
 Garden, The
 Garden Blossoms Florist
 *Independent Mobility
 J & M Pipe & Tobacco
 *Kidding Around Consignment
 K's Merchandise
 *Lipton Mart Exxon Mobil
 *Mana Crypt Gaming Center
 *Miller Supply
 *Museum Facsimiles Outlet Store
 *Nene's Deco
 O'Reilly Auto Parts
 *Paul Rich & Sons Home Furnishings + Design
 *Peace Train Tees
 *Pittsfield Farmers Market
 Pittsfield Health Food Centre
 *Pittsfield Precious Metals
 *Plaine's Bike Ski & Snowboard

*Pup Daddy Productions
 *QuickFix Mobile Repair and More
 *Remedy & Culture
 Rent-A-Center
 Salvo Creative
 *Sally Tiska Rice - Berkshire Rolling Hills Art
 *Schilling TV
 *Shire Fire Candle Co.
 *Soma's Aromas
 Soulful Intentions
 *Steven Valenti's Clothing
 TABBOO, LLC
 *The Plant Connector
 This & That Sports
 *Thistle 'n Thorn Floral
 Tux Express
 Viale Florist Inc
 Walgreens
 West Side Clock Shop
 West Street Wine & Spirits
 *Witch Slapped

TRAVEL & TRANSPORTATION - P. 36

Amtrak
 *Berkshire Regional Transit Authority
 Greyhound Bus
 Peter Pan Bus
 Pittsfield Municipal Airport

UTILITIES/ENERGY - P. 37

Berkshire Gas Company
 Eversource
 *Lipton Energy
 *Mirabito Energy

THIS GUIDE IS A COLLABORATION BETWEEN

Downtown Pittsfield, Inc. (DPI)

33 Dunham Mall | 413-443-6501
 downtownpittsfield.com



Downtown Pittsfield, Inc. is Pittsfield's downtown association; the driving force, recognized leader, facilitator, and principal advocate for downtown since 1983. DPI is a nonprofit membership organization whose mission is to strengthen and promote Downtown Pittsfield, Inc.'s membership through advocacy, collaboration, and celebration. Downtown Pittsfield, Inc. and its members welcome people, businesses, and events to join our diverse, vibrant, and bustling district.

The City of Pittsfield's Office of Cultural Development

28 Renne Ave. | 413-499-9348
 lovepittsfield.com



Serves as the City's first point of contact for artists, cultural organizations, event organizers, and creative businesses in Pittsfield. We support, promote, and initiate cultural activity in Pittsfield to benefit our citizens, quality of life, and local economy. The Office is located in the city-owned Lichtenstein Center for the Arts in Pittsfield's Upstreet Cultural District. The building features a gallery/performance space featuring changing exhibitions, classes, meetings, and performances, as well as a ceramic studio, dark room, and nine working artist studios.



Pittsfield is packed with outdoor adventures – minutes from downtown!

Four-season outdoor fun abounds in Pittsfield from hiking and skiing to swimming and boating, to mountain biking and more. We are home to **Pontoosuc and Onota Lake, Pittsfield State Forest, Bousquet Mountain**, and Berkshire County's largest skate and BMX park, the **Pittsfield Skate Plaza. Clapp Park** and **The Common** feature splash pads in the summer, and in the winter, **Osceola and Clapp Parks** provide the ideal spot for sledding and tubing. And we would be remiss not to mention the breathtaking foliage in the fall!

Pittsfield has many beautiful spots to unplug and appreciate nature's wonders. **The Berkshire Natural Resources Council (BNRC)**, a nonprofit, charitable organization that works to protect and conserve lands throughout Berkshire County, maintains trails and reserves that are open to the public; two of which have trailheads located in Pittsfield: **Mahanna Cobble Trail** and **The Boulders Reserve**.

The City of Pittsfield maintains multiple conservation areas; among them the 74-acre **Barkerville Conservation Area**, the 112.5-acre **Wild Acres**, and the 10.2-acre **Fred Garner Park**, which all feature hiking trails open to the public.

The 65-acre **Pittsfield State Forest** features 35 miles of trails perfect for hiking, mountain biking, and cross-country and backcountry skiing. Enjoy camping, picnicking, swimming, and kayaking. Parking fees apply, please visit mass.gov/locations/pittsfield-state-forest for more information.

Canoe Meadows, a 253-acre Wildlife Sanctuary operated by **Mass Audubon**, attracts warblers, turtles, ospreys, and otters to its scenic woods, fields, and wetlands along the edge of the Housatonic River. Enjoy 3 miles of gentle, well-marked walking trails and a 4.5-acre community garden.

The 188-acre **Burbank Park at Onota Lake** features a swimming beach, fishing pier, public boat launch, bath house, picnic areas, playground, toy library, paved scenic walkway, and Pittsfield's first **dog park**. **Pontoosuc**

Lake Park, 23-acres, features swimming, a public boat launch, and picnic areas. Rent a boat or kayak and treat yourself to a day on Onota or Pontoosuc Lake.

The Ashuwillticook Rail Trail is a paved, 10-foot-wide biking, running, and walking trail running through Pittsfield, Lanesborough, Cheshire, and Adams. Free parking at the Crane Avenue entrance in Pittsfield, and open to the public year-round.

The 246-acre **Springside Park** features the Vincent J. Hebert Arboretum (a living tree library), colorful butterfly and hummingbird gardens, a peaceful Memory Garden, the Vincent J. Hebert Lilac Walk, and Springside Pond. The park also features a handicap accessible playground and the Springside House, formerly the house of Abraham Burbank in 1860, which was added to the National Register of Historic Places in 2008.

The newly modernized **Bousquet Mountain**, a 200-acre ski area minutes from downtown, features twenty-four trails, a ski and snowboard terrain park, snowtubing, and full dining facilities with breathtaking mountain views.

There are also serene trails to enjoy at our historic and cultural destinations. The grounds at **Herman Melville's Arrowhead** and the nature trails behind the barn are open year-round, sunrise to sunset, for public use, and there are numerous trailheads with historical significance at **Hancock Shaker Village**.

Berkshires

OUTSIDE

875+ miles of trails
 560+ access points
 90+ clubs & leagues
#INTHEBERKSHIRES
BerkshiresOutside.org

Ashuwillticook Rail Trail, Couple on Onota Lake, and Pittsfield State Forest photos, credit Good Bites & Glass Pints; Snowboarder, credit Bousquet Mountain; Boating on Pontoosuc Lake, credit Gillian Jones-Heck/Berkshire Eagle

Broadway-Quality Performances in Downtown Pittsfield

JUNE 27–JULY 21
at The Colonial Theatre

MEL BROOKS, YOUNG FRANKENSTEIN

in association with Bay Street Theater & Geva Theatre Center
book by Mel Brooks and Thomas Meehan music and lyrics by Mel Brooks
original direction and choreography by Susan Stroman
directed by Stuart Ross
choreography by Gerry McIntyre



For a full event listing go to:
www.berkshiretheatregroup.org/on-our-stages/

UNICORN · COLONIAL · PLAYHOUSE

BERKSHIRE
THEATRE GROUP



(413) 997-4444

BerkshireTheatreGroup.org

The Colonial Theatre
111 South Street • Pittsfield



BARRINGTON STAGE COMPANY 30 YEARS | 2024 SEASON

BOYD-QUINSON STAGE

TONY AWARD-WINNING
BEST MUSICAL

LA CAGE AUX FOLLES

Book by HARVEY FIERSTEIN
Music & Lyrics by
JERRY HERMAN
Directed by MIKE DONAHUE
JUNE 11–JULY 6

TONY AWARD-WINNING
BEST PLAY REVIVAL

BOEING BOEING

By MARC CAMOLETTI
Directed by JULIANNE BOYD
JULY 17–AUG 3

WINNER! PULITZER
PRIZE FOR DRAMA

NEXT TO NORMAL

Music by TOM KITT
Book & Lyrics by
BRIAN YORKEY
Directed by ALAN PAUL

AUG 13–SEPT 8

ST. GERMAIN STAGE

A TENDER THING

By BEN POWER
Directed by ALAN PAUL
JUNE 25–JULY 20

WORLD PREMIERE!

FORGIVENESS

By MARK ST. GERMAIN
Directed by
RON LAGOMARSINO
JULY 30–AUG 25

NAMED TO NY TIMES "BEST
THEATER OF 2023" LIST

PRIMARY TRUST

By EBONI BOOTH
SEPT 18–OCT 13



TICKETS
START
AT \$30

The cast of Next to Normal, Round House Theatre. Photo by Margot Schulman

BARRINGTONSTAGECO.ORG • 413.236.8888